

LEGEND:

- CL = CENTERLINE
- P.R.M. = PERMANENT REFERENCE MONUMENT (4"x4" CONCRETE MONUMENT STAMPED "PRM LB353") UNLESS STATED OTHERWISE
- P.R.P.B.CO. = PUBLIC RECORDS OF PALM BEACH COUNTY
- SECTION 28/46/43 = SECTION 28, TOWNSHIP 46 SOUTH, RANGE 43 EAST
- P.U.E. = PUBLIC UTILITY EASEMENT
- C-1 = CURVE #1 (SEE CURVE TABLE)
- C.B. = CHORD BEARING
- C.A. = CENTRAL ANGLE
- NR. = NOT RADIAL

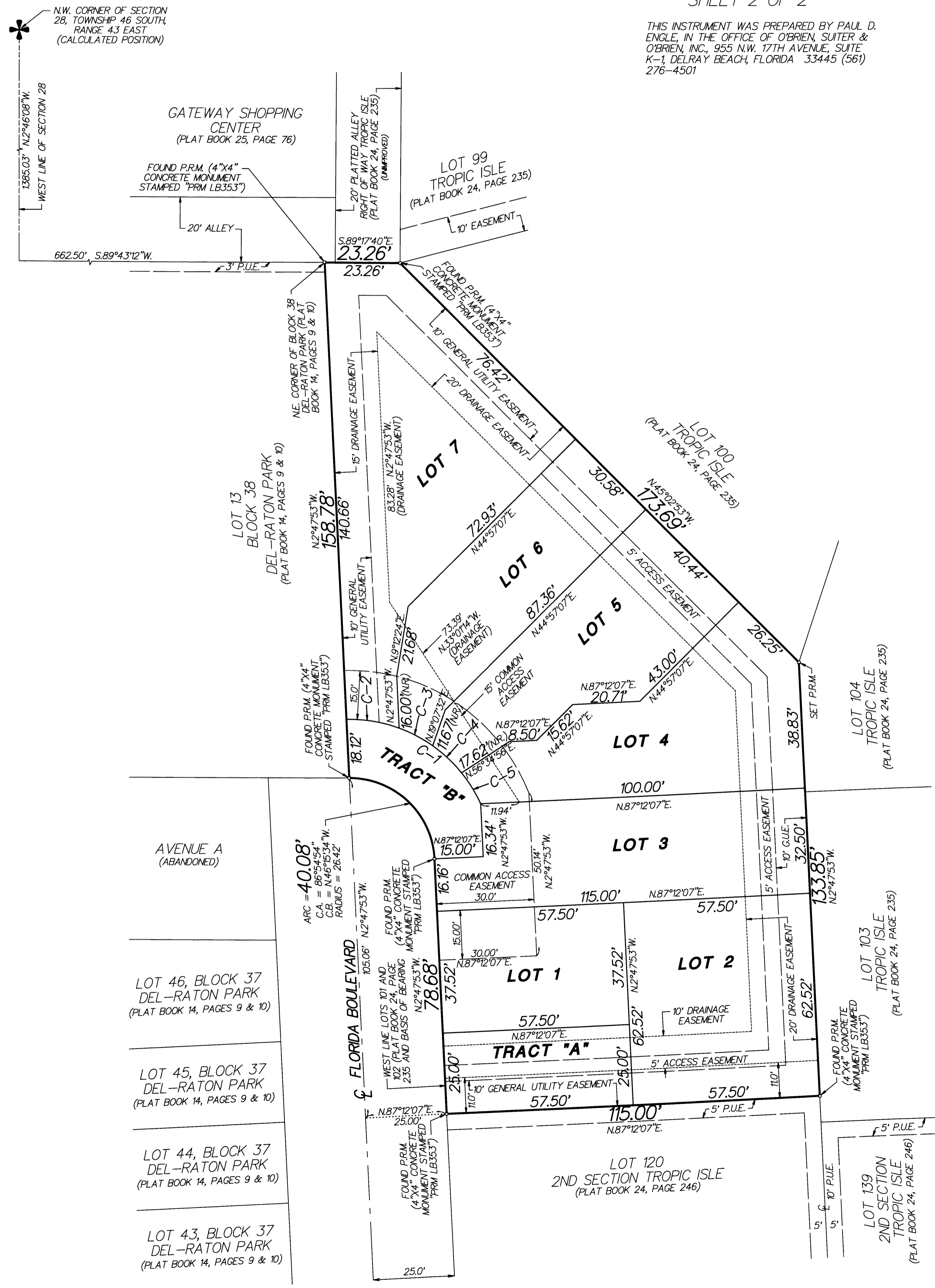
DELRAY 7 TOWNHOMES

BEING A REPLAT OF LOTS 101 AND 102, TROPIC ISLE (PLAT BOOK 24, PAGE 235, P.R.P.B.CO.), BEING IN SECTION 28, TOWNSHIP 46 SOUTH, RANGE 43 EAST, CITY OF DELRAY BEACH, PALM BEACH COUNTY, FLORIDA

SHEET 2 OF 2

THIS INSTRUMENT WAS PREPARED BY PAUL D. ENGLE, IN THE OFFICE OF O'BRIEN, SUITER & O'BRIEN, INC., 955 N.W. 17TH AVENUE, SUITE K-1, DELRAY BEACH, FLORIDA 33445 (561) 276-4501

77



CURVE TABLE

CURVE #	CENTRAL ANGLE	ARC LENGTH	RADIUS	CHORD BEARING
C-1	66°38'40"	51.79'	44.53'	S57°38'54"E
C-2	21°27'35"	16.60'	44.53'	S80°17'26"E
C-3	15°03'36"	11.70'	44.53'	S62°04'51"E
C-4	15°42'54"	12.21'	44.53'	S46°44'46"E
C-5	14°30'55"	11.28'	44.53'	S31°35'02"E

AREA TABLE

LOT #	AREA
1	2152 SQ. FT.
2	3593 SQ. FT.
3	3492 SQ. FT.
4	3118 SQ. FT.
5	3118 SQ. FT.
6	2308 SQ. FT.
7	5228 SQ. FT.
TRACT "A"	1437 SQ. FT.
TRACT "B"	949 SQ. FT.